

Specification # 15343 Transformer, In-line, 1991

1. SCOPE

This specification describes a requirement for an AC-to-AC in-line adaptor transformer. It will step down the 230 VAC from central European power mains to the 18 VAC required by the Model 1991 Satellite Music Receiver. It will comply to all established European safety standards.

2. ELECTRICAL SPECIFICATIONS

(Refer to Figure A.)

Primary Input (Nominal)	230 VAC rms 50 Hz
Secondary Load Current	1.2 A rms
Secondary Output Voltage (at 230 VAC in, 1.2 A load)	18.0 +/-1 VAC rms
Load Fault Protection	Primary winding shall include fuse-link to prevent fire hazard

3. MECHANICAL SPECIFICATIONS

(Refer to Figure B.)

Construction Type	In-line adaptor with primary and secondary cordage
Input Connector	CEE 7/4 "Schuko" in-line plug
Input cordage	3-conductor, rated to 10A per VDE, 6 ft.
Output Connector	Pacific KT-601 plug, mates to Pacific Jack #LA-2001
Output Cord	3 conductor, 22 AWG, 6 ft., with durable jacket

SIZE	CODE IDENT NO.	DRAWING NO.
A		15343
SCALE		SHEET 2 of 4

4. ENVIRONMENTAL SPECIFICATIONS

Operating Temperature (ambient) 0 to 50 degrees C

Operating Humidity 0 to 90% non-condensing

4. REGULATORY AGENCY SPECIFICATIONS

VDE approved

5. LABELING

The transformer shall be labeled in accordance with regulatory agency requirements and will include Wegener Communications name and logo along with equipment description as specified. Wegener Communications' name and logo artwork to be provided with order.

SIZE	CODE IDENT NO.	DRAWING NO.
A		15343
SCALE		SHEET 3 of 4

FIG. A SCHEMATIC

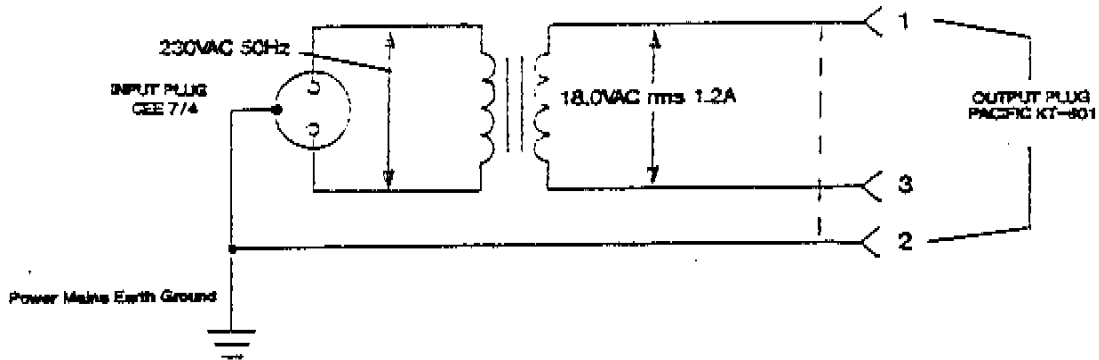
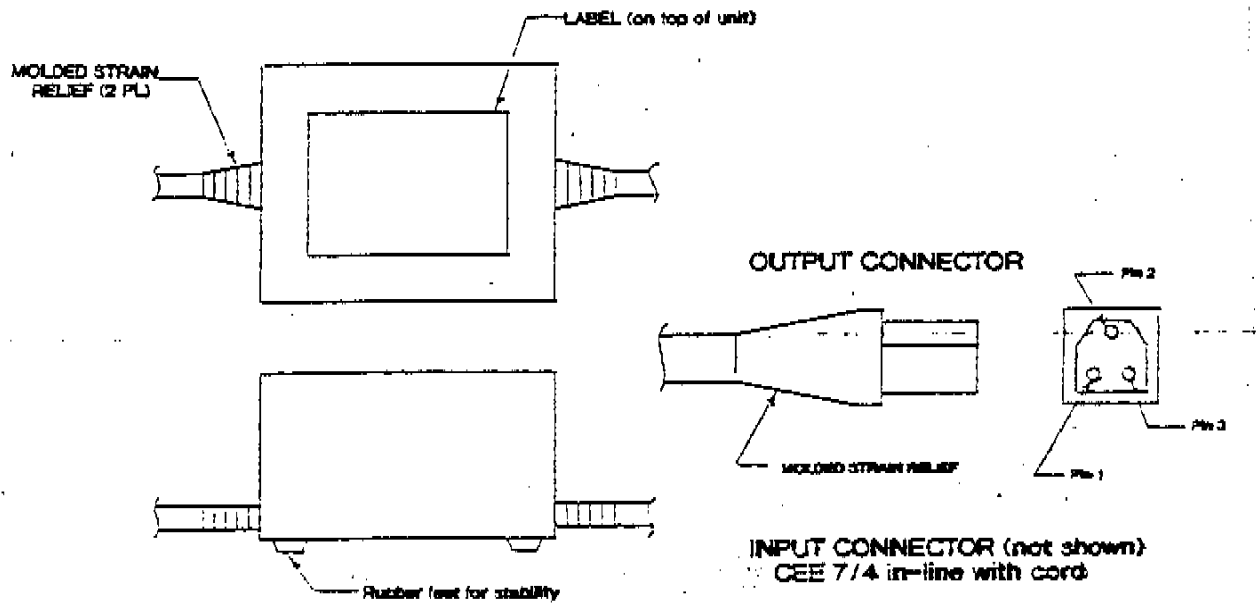


FIG. B CONSTRUCTION



SIZE A	CODE IDENT NO.	DRAWING NO. 15343
SCALE		SHEET 4 of 4